

What happens if I love living there and would like to stay?

You cannot remain in this property as it is furnished and has been set aside for the Try Before You Apply Scheme. But don't worry, you can apply for an apartment of your own by visiting www.pfh.org.uk/find-a-home/apply-for-a-home. Participants will be given priority so they will be considered above others on the list.

Evaluation

We will ask all participants of the scheme to provide us with feedback about your stay.

This is to find out:

- What people think about the scheme
- What works well
- Anything that doesn't work well, or which could be changed
- Whether the trial visits help people make decisions about future plans and accommodation.

Everyone applying will be invited to take part. We would love to hear your views, and we will ask you to complete a feedback form.

We can help you with this if you would like.

Information about you and your stay will of course be kept confidential. We will provide further information on the research should you request it.

What are my responsibilities?

When occupying one of the Try Before You Apply apartments, we ask that you:

- Keep it clean and tidy
- Report any repairs or faults to PFH
- Report any breakages or damage caused to any of the items in the apartment
- Ensure the property is completely cleared of all your belongings and left clean and tidy on the day you leave
- Ensure that the keys are returned by noon on your final day



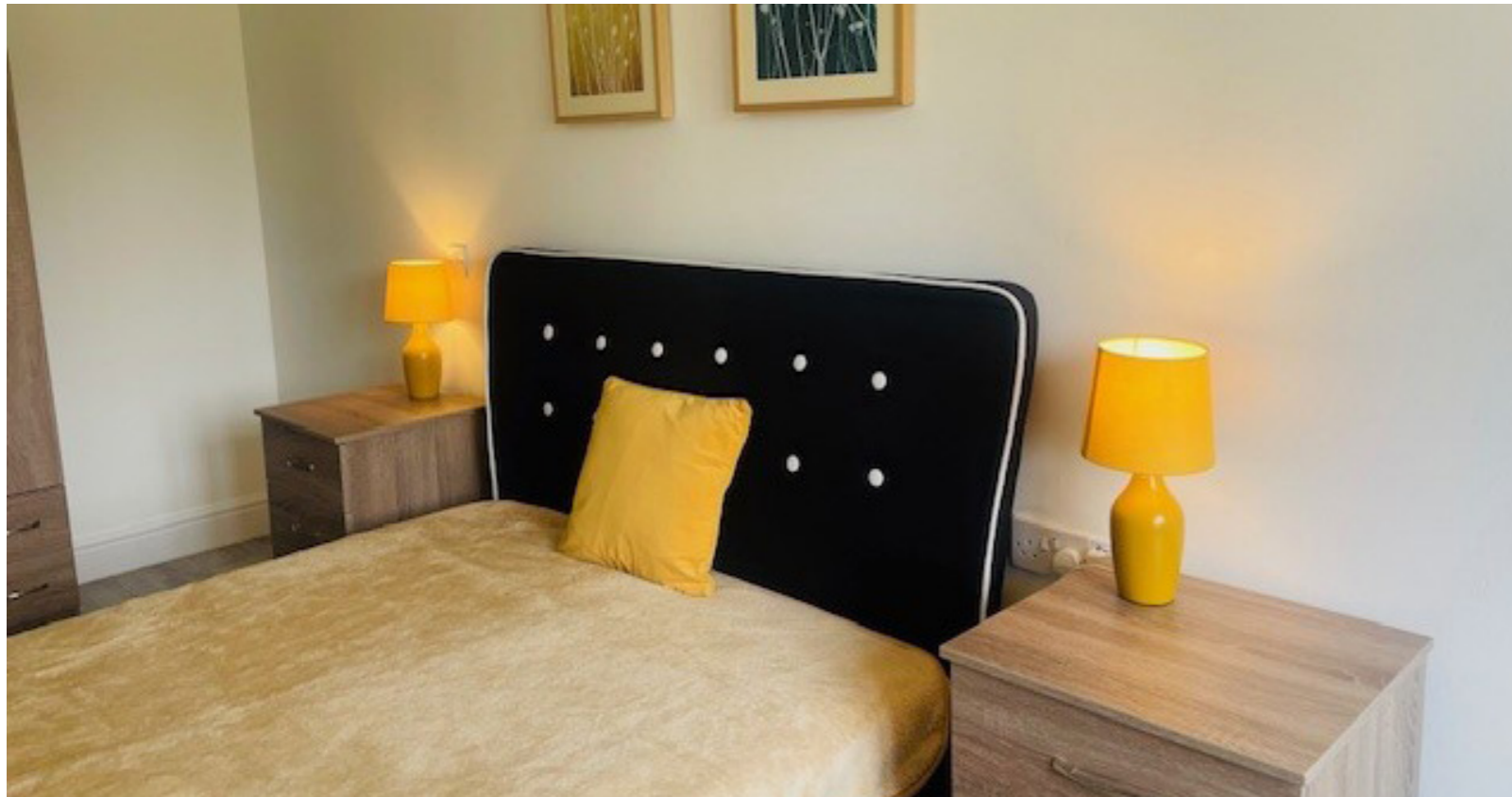
60+ and looking for a suitable retirement property?

What is Try Before You Apply?

It's all about giving people the opportunity to experience what it's like to live in a PFH Plus apartment, without making any commitment. In other words, "Try Before You Apply!"

If you and/or your partner are 60 and over, you can stay in a PFH Plus apartment for a short time to experience what it's like and whether it's for you. You can take full advantage of the facilities, services and activities on offer, without any commitment. If you like it, you can apply to live in one of your own!

We have set aside an apartment at Ada Holmes Circle, Greenwood Avenue, in north Hull, for the Try Before You Apply Scheme.



Where are all your PFH Plus properties?

PFH have a total of five PFH Plus schemes across Hull. They are designed for people aged 60 and over who want to live comfortably, happily, securely and independently. They are perfect for those who want to make the most of their retirement. PFH Plus is all about promoting independence, so whilst PFH staff can support and guide you, we will not provide care or meals. All apartments are self-contained and private. Our PFH Plus developments are below.

- Ada Holmes Circle, Greenwood Avenue, Hull, HU6 9PB
- Broadway Manor, The Broadway, Hull, HU9 3PN
- Christopher Pickering Lodge, Hessle High Road, Hull, HU4 6RS
- Humber View, Victoria Dock, Hull, HU9 1SZ
- Malin Lodge, Maybury Road, Hull, HU9 3LH

The benefits and facilities available in PFH Plus schemes, to count a few, are as follows:

- Fully independent accommodation
- Scheme Manager available during office hours Monday to Friday to support and advise residents
- A busy social calendar of events taking place in the scheme
- A variety of health and wellbeing initiatives to keep you mentally and physically healthy
- Excellent services including repairs
- A feeling of community and security, with secure controlled door entry system
- Your own private self-contained apartment (living room, kitchen, bedroom, bathroom)
- A host of facilities including a lounge, which is a shared space, perfect for getting together to enjoy a coffee, tea and cake or share creative activities or hobbies. There is also a laundry, hairdressing salon and attractive gardens)
- Communicall telecare to optimise your safety and security, and pro-active PFH Connect device to ensure your health and wellbeing.

Where is the Try Before You Apply Apartment located?

The apartment is at Ada Holms Circle, Greenwood Avenue, in north Hull. It is a one bedroom apartment and access to it does not require climbing a flight of stairs. It has been set aside specifically for those who are keen to try out living in one of these apartments and taking full advantage of all the facilities and social activities, without having to make any commitment.



How long can I stay for?

You can stay for up to three weeks. During this time, it is hoped that you will have had the time to get a genuine feel for the apartment, the building, the services on offer, the local area and the overall feeling of the scheme, and whether it suits you. If during the time you are there you decide that you do not want to stay for the full 3 weeks, we ask that you let us know immediately, so that we can arrange to check the property and get the keys back from you.

What happens to my own property?

Nothing. The Try Before You Apply scheme does not affect your current property or your benefits. Everything will be just as it was when you return home.

Eligibility

In order to qualify, you will need to meet the following criteria:

- Be a single person or couple, both aged 60 and over
- Live in, or have been born in, Hull or the East Riding of Yorkshire
- Have less than £235,000 in assets/capital etc
- Not be in temporary accommodation or currently homeless
- We may allow pets in some circumstances.
- And you may bring a pet should you be successfully permanently rehoused at a later date.

How much does it cost?

Nothing. You do not have to pay any Weekly Maintenance Contribution (rent) or for any of the services whilst you're on the trial. It will not affect your housing benefit or any other benefits at your current property, nor any other benefits that you may be entitled to.



Who should I inform?

If you receive care, you need to make the care provider aware of your temporary change of address. You may also need to cancel or change any deliveries you usually receive, such as milk or papers.

What will I need to bring?

The properties are fully furnished but you will need to bring some things. Think of it as going on holiday; what would you normally take with you? An indication of what you'd need to take is as follows:

- Bedding (duvet, sheets, blankets, pillows)
- Towels (bath sheet and hand towel)
- Clothes
- Toiletries
- Food
- Toilet roll

What PFH will provide

- Dish cloths/pan scrub
- Tea towels
- Washing up liquid
- A bin liner
- Laundry tablet

Remember, you can always pop home for things and there are shops very close by for anything else you need.

I'm interested, what do I do?

You may have been provided with this leaflet by an Occupational Therapist, GP, Social Worker, Support Worker or other agencies. They can complete a referral form (which you will be asked to sign) and they will send it to us. You can also apply directly to us yourself - give us a call on 01482 223783 or email us at info@pfh.org.uk.

Please remember that there may be other people waiting. We prioritise based on the date you expressed your interest in the scheme.



01482 223 783
info@pfh.org.uk